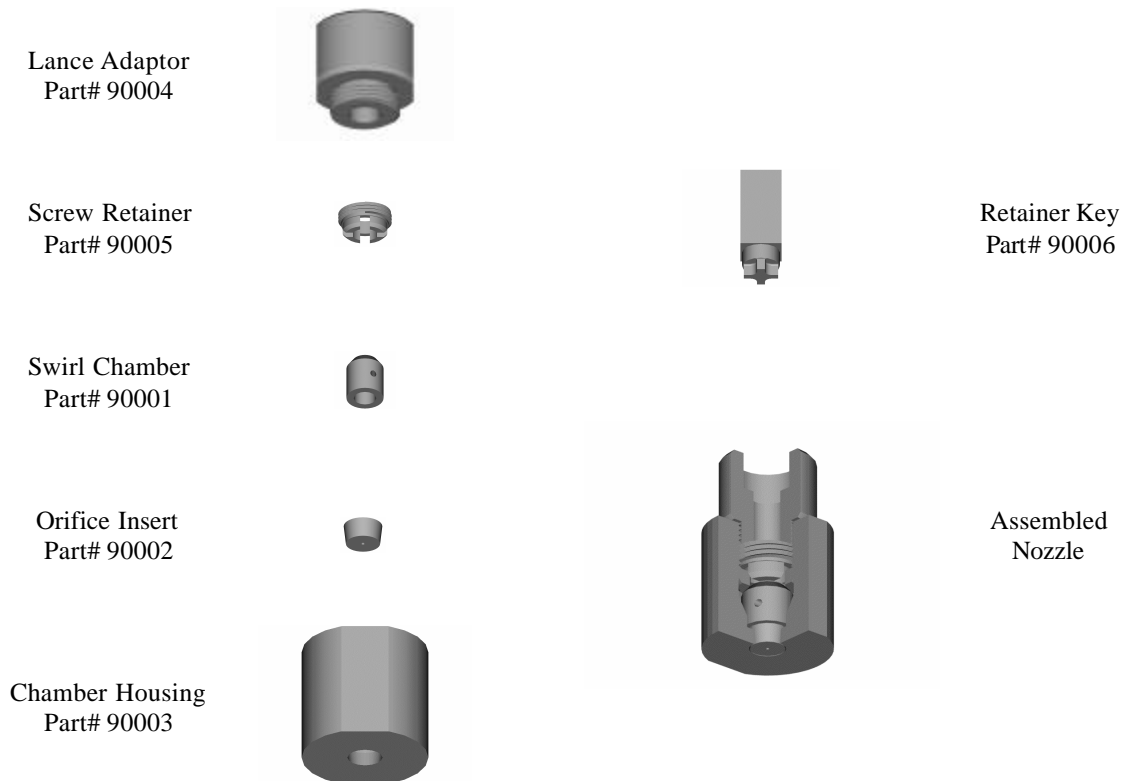


SDS “O” Series Spray Drying Pressure Nozzle



Nozzle Inserts (*Swirl Chamber and Orifice Insert*)

- ✓ Hollow cone spray for optimum spray drying results
- ✓ Uniform droplet distribution for the most narrow product particle size distribution
- ✓ Full size range of tungsten carbide inserts for wide range in flow rates, spraying pressures, and spray angles
- ✓ Available in “A” carbide for superior wear resistance for non-corrosive, abrasive fluids

Nozzle Body Parts (*Chamber Housing, Lance Adaptor, Screw Retainer*)

- ✓ Different alloys of mating threaded components minimize galling problems
- ✓ Lance Adaptors available with 1/2" NPT or 1/2" socket weld connection
- ✓ Spraying pressures to 5,000 psig
- ✓ Gasket-less design for use for many slurries
- ✓ Retainer Key for easy removal of screw retainer for changing inserts